

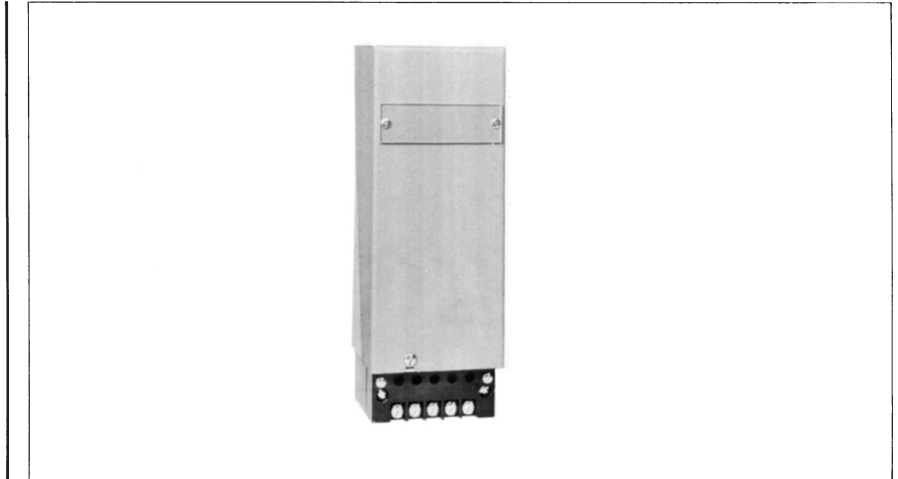
# Systempak

## Single-I/P Converter

### Model KUX112

#### Introduction

Single-I/P Converter (Model KUX112) is an extremely compact instrument which converts and electrical current signal into a pneumatic pressure signal. The KUX112 is of a 2-wire type.



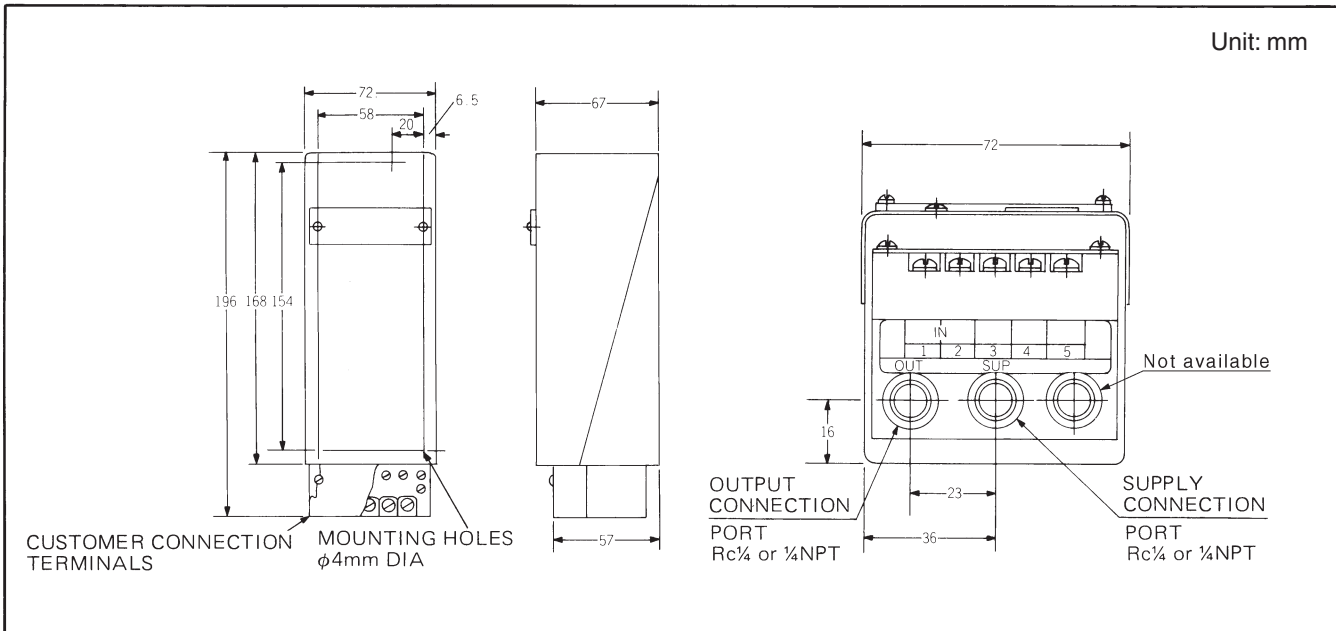
#### Standard Specifications

| Item                               | Specifications  |
|------------------------------------|---|
| <b>Input Signal</b>                | 4~20mA DC   |
| <b>Input Resistance</b>            | 340 ohms MAX.   |
| <b>Output Signal</b>               | 0.2~1.0kgf/cm <sup>2</sup> {20~98kPa}, 3~15psi, 0.2~1.0bar,<br>20~100kPa (Rated pressure: 2kgf/cm <sup>2</sup> {200kPa} ) |
| <b>Air Supply</b>                  | 1.4kgf/cm <sup>2</sup> {140kPa} $\begin{matrix} +30\% \\ -10\% \end{matrix}$  |
| <b>Air Consumption</b>             | 4Nℓ/minute MAX.   |
| <b>Max. Pneumatic Delivery</b>     | 20Nℓ/minute   |
| <b>Max. Pneumatic Exhaust</b>      | 20Nℓ/minute   |
| <b>Minimum Load Capacity</b>       | ID 4mm copper pipe×3m+20cm <sup>3</sup>   |
| <b>Electrical</b>                  | With binding screws (M3×6mm)  |
| <b>Air Connection</b>              | Rc $\frac{1}{4}$ , $\frac{1}{4}$ NPT, internal thread   |
| <b>Ambient Temperature</b>         | 0 to 50°C   |
| <b>Ambient Humidity</b>            | 10 to 90% RH  |
| <b>Accuracy</b>                    | ±0.25% FS   |
| <b>Hysteresis Error</b>            | 0.15% FS  |
| <b>Dead Band</b>                   | Within 0.05% FS   |
| <b>Temperature Characteristics</b> | Zero shift: ±1% FS/25°C MAX.<br>Span shift: ±1% FS/25°C MAX.  |
| <b>Structure</b>                   | Indoor installation type  |
| <b>Mounting</b>                    | Wall mount  |
| <b>Weights</b>                     | Approx. 1.6kg   |

## Model Number Table

| Basic Model No. | Selections   |       |        |            |          |             | Options | Description                               |
|-----------------|--------------|-------|--------|------------|----------|-------------|---------|---|
|                 | Power Supply | Input | Output | Connection | Mounting | Environment |         |   |
| KUX112          |              |       |        |            |          |             |         | Single-I/P Converter                      |
|                 | -X           |       |        |            |          |             |         | None                                      |
|                 |              | 1     |        |            |          |             |         | 4~20mA DC                                 |
|                 |              |       | 1      |            |          |             |         | 0.2~1.0kgf/cm <sup>2</sup> {20~98kPa}     |
|                 |              |       | 2      |            |          |             |         | 3~15psi                                   |
|                 |              |       | 3      |            |          |             |         | 0.2~1.0bar                                |
|                 |              |       | 4      |            |          |             |         | 20~100kPa                                 |
|                 |              |       |        | A          |          |             |         | Rc¼                                       |
|                 |              |       |        | B          |          |             |         | ¼ NPT, internal thread                    |
|                 |              |       |        |            | S        |             |         | Wall mount, indoor installation           |
|                 |              |       |        |            |          | X           |         | Standard                                  |
|                 |              |       |        |            |          | A           |         | For tropical service (Upon special order) |
|                 |              |       |        |            |          | B           |         | Corrosive atmosphere (Upon special order) |
|                 |              |       |        |            |          |             | -X      | No options                                |

## Dimension Drawing



Please, read 'Terms and Conditions' from following URL before the order and use.

<http://www.azbil.com/products/bi/order.html>

Specifications are subject to change without notice.

**azbil**

**Azbil Corporation**  
Advanced Automation Company

1-12-2 Kawana, Fujisawa  
Kanagawa 251-8522 Japan  
URL: <http://www.azbil.com/>

5th edition: July 2015

No part of this publication may be reproduced or duplicated without the prior written permission of Azbil Corporation.