

Systempak Module File for A-MC Model J-SFA 20

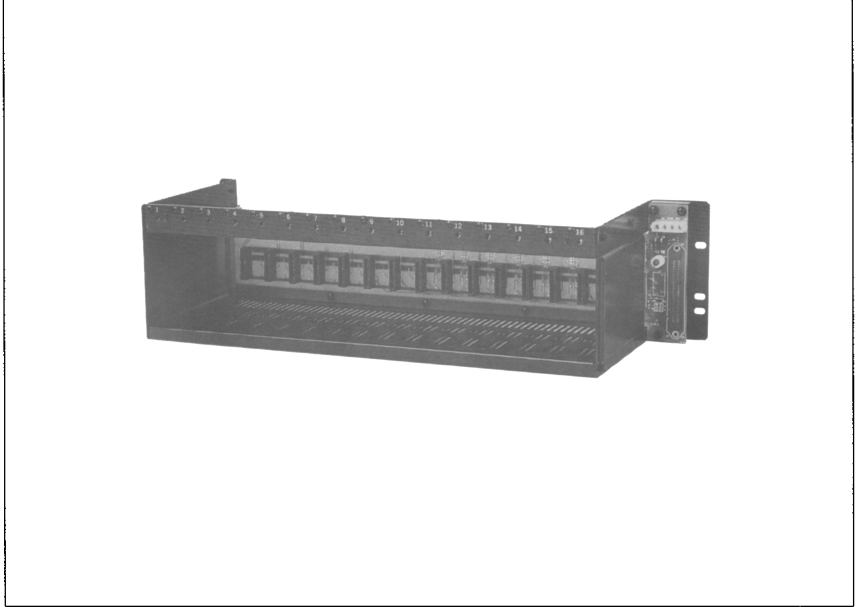
Introduction

The Module File for A-MC (J-SFA 20) consists of a cage for a accommodating modules, a backplane, a four-pinned power supply receptacle and an LED (activated when the power is on).

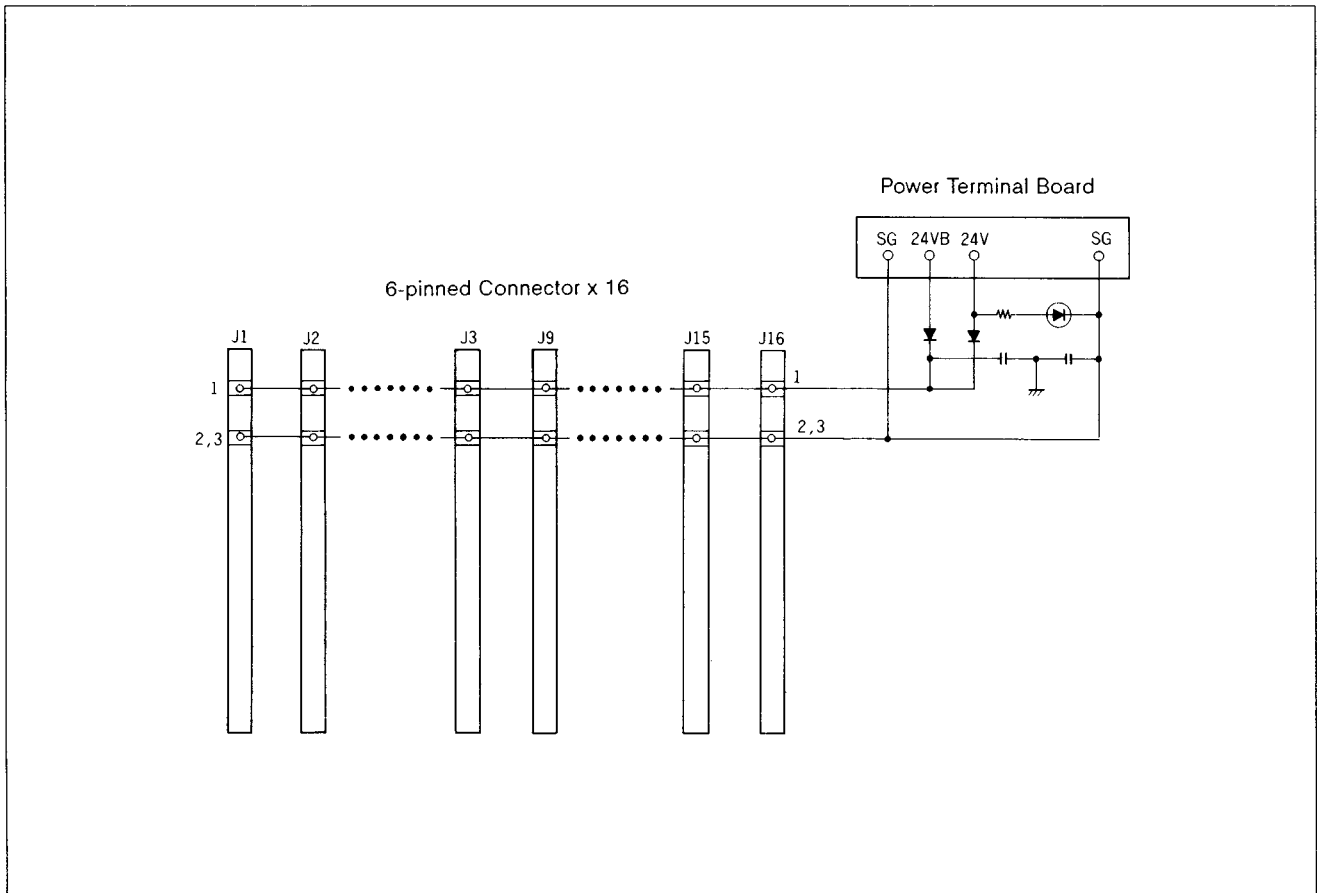
The File accommodates up to 16 modules, and module type and module location (slot) are user-definable.

Power is supplied externally to each module through the mother board edge connector on the backplane.

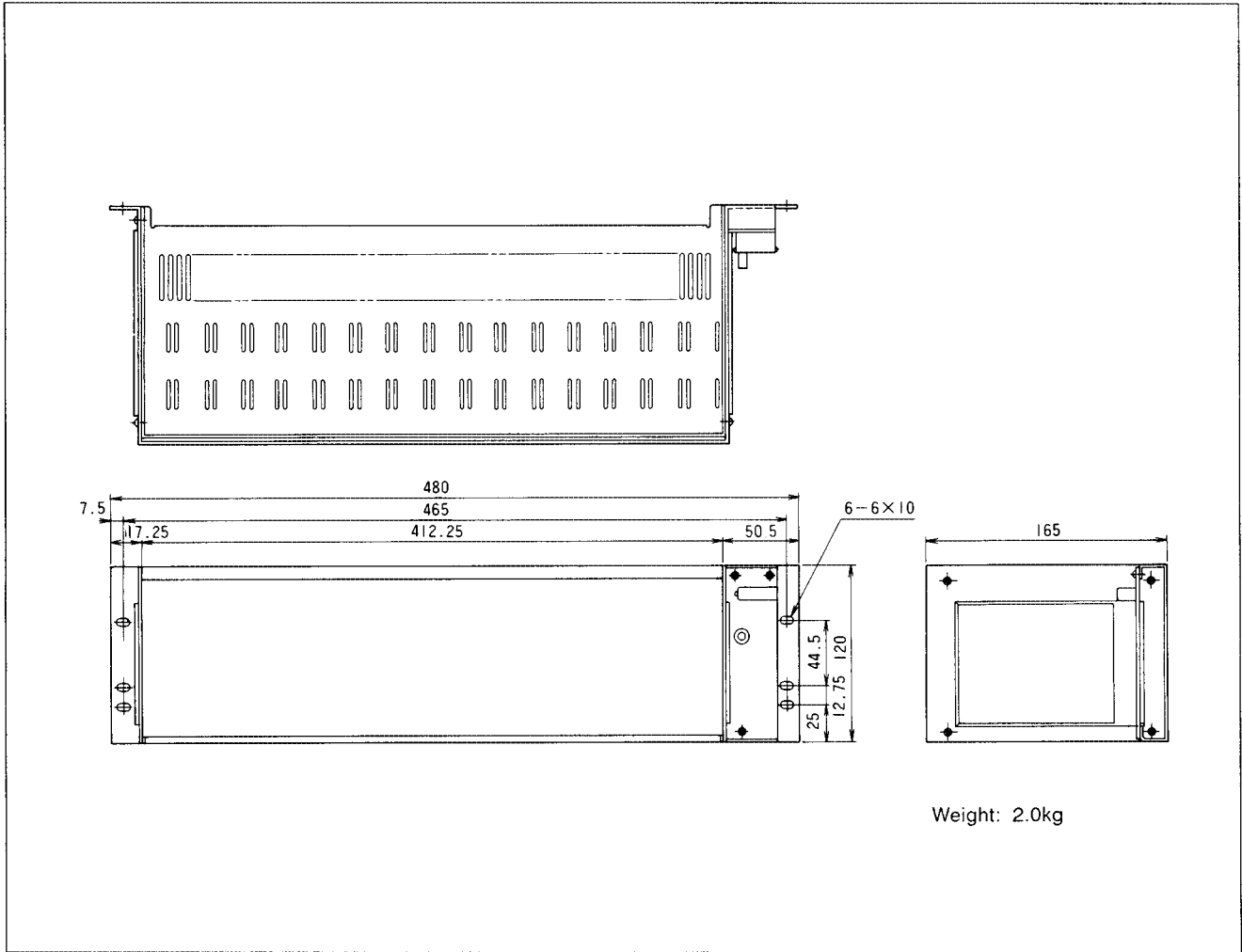
As a dedicated file for the A-MC, the File (model J-SFA 10) is available, which connects the I/O modules of the A-MC through the I/O cable.



File Configuration



Dimensions



Specifications are subject to change without notice.

Yamatake Corporation

Totate International Building
2-12-19 Shibuya
Shibuya-ku Tokyo 150-8316
Tel : 81-3-3486-2270
Fax : 81-3-3486-2593

Yamatake-SIC Control Systems Co., Ltd.	: China	86-10-6326-9844/55
Shanghai Yamatake Jinshan Control Instruments Co., Ltd.	: China	86-21-5793-5334
Yamatake Korea Co., Ltd.	: Korea	82-2-785-0280-2
Yamatake (Thailand) Co., Ltd.	: Thailand	66-2-210-0900-7
Yamatake Philippines, Inc.	: Philippines	63-2-817-6452
PT. Yamatake Berca Indonesia	: Indonesia	62-21-230-5538/5539
Yamatake Controls Singapore Pte. Ltd.	: Singapore	65-778-5966
YCV Corporation	: U.S.A.	1-602-548-1800

Yamatake Industrial Systems Co.,Ltd.

This has been printed on recycled paper.

YAMATAKE

Savemation

Saving through Automation

<http://www.yamatake.co.jp/>

9908-Y/Y