

# Super Conductors

The Super Conductor Enclosure's innovative design transfers heat using heat conducting rods, creating a moisture free heat source. The super conductor provides dry penetrating heat for small enclosures housing batteries, radio controls and other moisture sensitive equipment.

## Features

- Designed to keep instrumentation at an operable temperature
- Electrical power is not required to maintain operation after start-up
- Designed to operate for extended periods of time without maintenance
- Cata-Dyne™ heaters are CSA and FM certified, available in both natural gas and propane
- Custom sizes and designs available

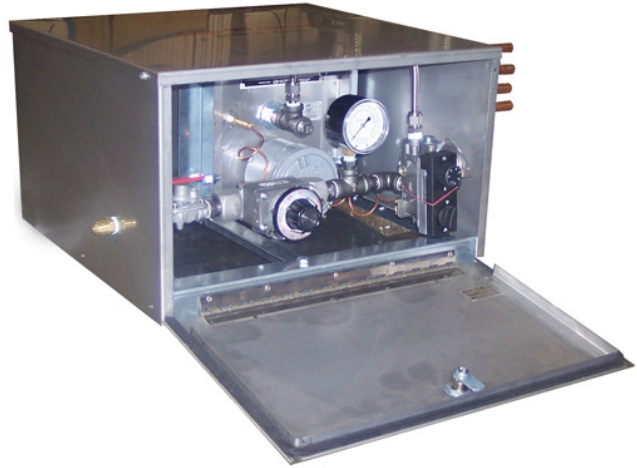


Table 12 – Super Conductor Enclosures

Part No.	Pipe Qty	Pipe Length		Heater Size	Length		Width		Height		Pipe Length	
		in	mm		in	mm	in	mm	in	mm	in	mm
SCH-4P-18-0808	4	18	457	8 x 8	17.30	439	17.20	437	10.40	264	8.50	216
SCH-4P-24-0808		24	610	8 x 8			17.2	437	10.40	264	14.50	368
SCH-4P-33-1212		33	838	12 x 12			19.00	478	14.75	375	19.50	495

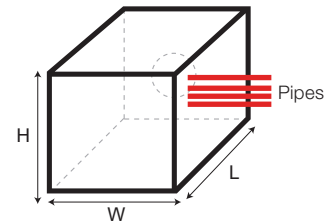
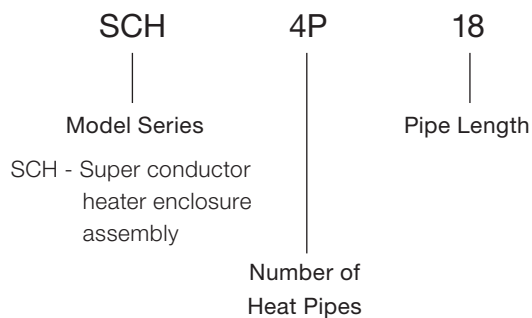


Figure 6

## Model Coding



## Heater Type

