

Eccentric sterile check valve with weld end



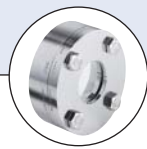
- All medium contact materials traceable
- Suitable for CIP and SIP (cleaning in process)
- Flow direction selectable
- Self draining in horizontal installations

Hygienic Processing components...



Type BBS-05

Quick Connect



Type BBS-07

Block flange



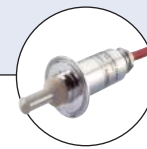
Type BBS-03F

Linear flow indicator



Type 2103

Diaphragm valve



Type 8221

Conductivity sensor



Type 8650

Process automation

The sterile check valves are appropriate for fluids and steam sterilisation. The design is so created that the flow direction is selectable, which improves the cost and simplicity of installation significantly. The new standards in the biotechnology and pharmaceutical industry are met.

These valves are suitable for horizontal applications, and still fully drain.

The standard check valves have a opening pressure of 0,2 bar.

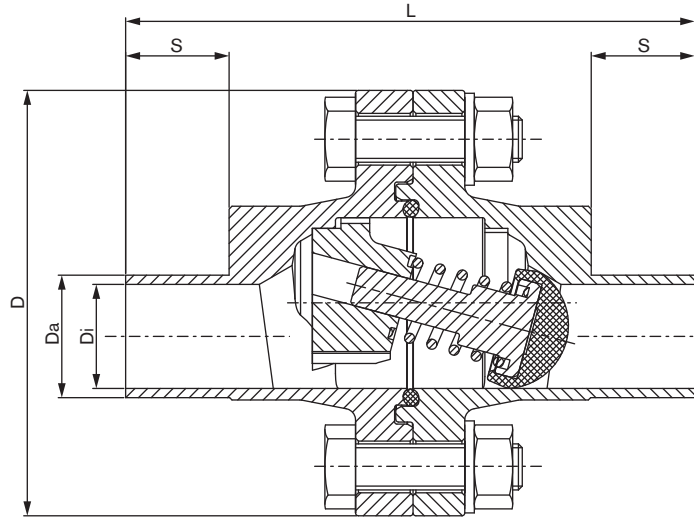
Technical data

Available standard sizes	ISO DN08 to DN100 BS-OD 1/4" to DN4" DIN DN08 to DN100 Customized on request
Material medium contact	Stainless steel 1.4435 BN2 (316L) Ball cap made of PTFE Spring: 1.4401 Special materials on request
Material medium separated	1.4305 or equivalent
Ball	1.4435 BN2 stainless steel with PTFE-Ball
Seals	O-Ring, EPDM, FEP, special sealing materials on request
Surface quality	Medium contacted surface < Ra 0,8µm, electro polished, finer surface on request
Operating temperature	depending on the chosen seal material
Ambient temperature	-20 to +80 °C
Media	Liquids
Design, operating pressure	-1 to +16 Bar (operating pressure -1 to +8 Bar) Standard opening pressure 0.2 bar Higher or lower pressures on request
Applicable Standards	Pipe connection acc. to DIN 11866 ISO-Dimension Series B (ISO 4200) BS-OD-Dimension Series C (ASME BPE) DIN-Dimension Series A (DIN 11850) Conformity assessment acc. to DGRL 97-25-EG
Certifications	Material 3.1 FDA for all the stated seal materials USP VI for EPDM, FEP, PTFE

Applications

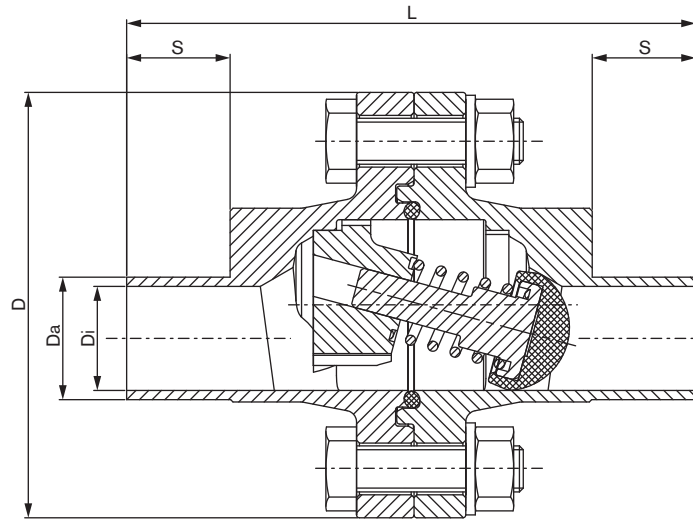
- Biotechnology
- Pharmaceutical
- Chemical industry
- Diary
- Food
- Cosmetic

Dimension [mm] Ball check valve eccentric with weld end



Orifice	D [mm]	Da [mm]	Di [mm]	L [mm]	S [mm]	Item no. EPDM	Item no. FEP
ISO Dimensions Ball check valve eccentric with weld end							
DN08	74.00	13.50	10.30	117.00	18.00	on request	on request
DN10	74.00	17.20	14.00	105.00	18.00	on request	on request
DN15	74.00	21.30	18.10	99.00	18.00	on request	on request
DN20	88.00	26.90	23.70	146.00	25.00	on request	742 970
DN25	88.00	33.70	29.70	127.00	25.00	on request	736 422
DN32	125.00	42.40	38.40	187.00	25.00	on request	on request
DN40	137.00	48.30	44.30	210.00	25.00	on request	736 458
DN50	137.00	60.30	56.30	180.00	25.00	on request	on request
DN65	194.00	76.10	72.10	226.00	20.00	on request	on request
DN80	194.00	88.90	84.30	216.00	25.00	on request	on request
DN100	260.00	114.30	109.70	216.00	30.00	on request	on request

Dimension [mm] Ball check valve eccentric with weld end



Orifice	D [mm]	Da [mm]	Di [mm]	L [mm]	S [mm]	Item no. EPDM	Item no. FEP
BS-OD Dimensions Ball check valve eccentric with weld end							
DN1/4"	74.00	6.35	4.57	137.00	18.00	on request	on request
DN3/8"	74.00	9.53	7.75	127.00	18.00	on request	on request
DN1/2"	74.00	12.70	9.40	117.00	18.00	on request	on request
DN3/4"	74.00	19.05	15.75	117.00	18.00	on request	on request
DN1"	88.00	25.40	22.10	155.00	25.00	on request	on request
DN1 1/2"	125.00	38.10	34.80	197.00	25.00	on request	on request
DN2"	137.00	50.80	47.50	186.00	25.00	on request	on request
DN2 1/2"	168.00	63.50	60.20	209.00	25.00	on request	on request
DN3"	168.00	76.20	72.90	185.00	25.00	on request	on request
DN4"	260.00	101.60	97.38	256.00	30.00	on request	on request

Orifice	D [mm]	Da [mm]	Di [mm]	L [mm]	S [mm]	Item no. EPDM	Item no. FEP
DIN Dimensions Ball check valve eccentric with weld end							
DN08	74.00	10.00	8.00	124.00	18.00	on request	on request
DN10	74.00	12.00	10.00	117.00	18.00	on request	on request
DN10	74.00	13.00	10.00	117.00	18.00	on request	on request
DN15	74.00	19.00	16.00	99.00	18.00	on request	on request
DN20	88.00	23.00	20.00	155.00	25.00	on request	on request
DN25	88.00	29.00	26.00	142.00	25.00	on request	on request
DN32	135.00	35.00	32.00	203.00	25.00	on request	on request
DN40	125.00	41.00	38.00	187.00	25.00	on request	on request
DN50	137.00	53.00	50.00	180.00	25.00	on request	on request
DN65	168.00	70.00	66.00	199.00	25.00	on request	on request
DN80	194.00	85.00	81.00	216.00	25.00	on request	on request
DN100	260.00	104.00	100.00	246.00	30.00	on request	on request

To find your nearest Bürkert facility, click on the orange box → www.burkert.com

In case of special application conditions,
please consult for advice.

Subject to alterations
© Christian Bürkert GmbH & Co. KG

1407/4_EU-en_00895171

Specification key (other versions on request)

Example **BBS-10 - ZX - WA - 25,0 - FE - VI - SD44 - T09 - ZUB - AE - NK52 + NO10**

Specification key

Delivery (LIUM)	
ZX	Centric check valve complete
ZA	Spare part set for centric check valve
EX	Eccentric check valve complete
EA	Spare part set for eccentric check valve

Connection Type (VRBT)	
WA	Weld fitting acc. to DIN 11850 series 2 / DIN 11866 series A
WB	Weld fitting acc. to DIN EN ISO 1127 / ISO 4200 / DIN 11866 series B
WC	Weld fitting acc. to ASME BPE / DIN 11866 series C
00	Without connection (spare part set)

Seal Material (DWST)	
AB	EPDM
FE	FEP

Material (WKST)	
HA	Hastelloy C2
VI	1.4435 acc. BN2 and 316L acc. to ASME BPE chart DT3
VU	1.4539
VN	1.4410
VV	1.4547

Orifice (DN)
08.0
10.0
20.0
25.0
32.0
40.0
50.0
65.0
80.0
0100

Internal polishing	
NO10	int. electro polished (Standard) Ra = 0,8 µm

Certificate	
NK52	3.1 Certificate (Standard)

Characteristic of functional part (KGFT)	
AA	opening pressure 0.012bar
AB	opening pressure 0.036bar
AC	opening pressure 0.6bar
AD	opening pressure 0.1bar
AE	opening pressure 0.2bar
AF	opening pressure 0.5bar
AG	opening pressure 0.68bar
AH	opening pressure 0.8bar
AI	opening pressure 1.0bar

Weld connection (LTA1)							
Port connection [mm]	EN ISO 1127/ ISO 4200	DIN 11850 row 0	row 1	row 2	row 3	BS 4825	ASME BPE
4		SC40=6x1,0					
6		SC41=8x1,0					
8	SA40=13,5x1,6	SC42=10x1,0				SODB=6,35x1,2	SA90=6,35x0,89
10	SA41=17,2x1,6		SF40=12x1,0	SD40=13x1,5	SE40=14x2,0	SODC=9,53x1,2	SA91=9,53x0,89
15	SA42=21,3x1,6	SC43=18x1,5	SF41=18x1,0	SD42=19x1,5	SE42=20x2,0	SODD=12,7x1,2	SA92=12,7x1,65
20	SA43=26,9x1,6	SC44=22x1,5	SF42=22x1,0	SD43=23x1,5	SE43=24x2,0	SODE=19,05x1,2	SA93=19,05x1,65
25	SA44=33,7x2,0	SC45=28x1,5	SF43=28x1,0	SD44=29x1,5	SE44=30x2,0		SODF=25,4x1,65
32	SA45=42,4x2,0	SC46=34x1,5	SF44=34x1,0	SD45=35x1,5	SE45=36x2,0		
40	SA46=48,3x2,0	SC47=40x1,5	SF45=40x1,0	SD46=41x1,5	SE46=42x2,0		SODH=38,1x1,65
50	SA47=60,3x2,0	SC48=52x1,5	SF46=52x1,0	SD47=53x1,5	SE47=54x2,0		SODI=50,8x1,65
65	SA48=76,1x2,0			SD48=70x2,0			SODJ=63,5x1,65
80	SA49=88,9x2,3			SD49=85x2,0			SODK=76,2x1,65
100	SA39=114,3x2,3			SD50=104x2,0			SODL=101,6x2,11