

PREX 3000 Vector Involute Type Pneumatic Differential Pressure Transmitters

Model KDP 71/72 (Remote Seal Diaphragm Type)



Introduction

The PREX3000 instruments are pneumatic type transmitters which employ a combination of vector balance mechanism and involute mechanism.

The instruments are featured by high resistance against adverse environments, high turn-down ratio, high accuracy, and ease of maintenance.

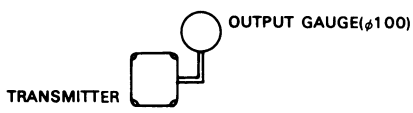
Standard Specifications

Item	Specifications				
Measuring range (continuously adjustable)	KDP 71: 0–25 to 0–500 kPa {0–2,500 to 0–50,000 mmH ₂ O} KDP 72: 0–2.5 to 0–53.9 kPa {0–250 to 0–5,500 mmH ₂ O}				
Process connection	Flange connection (both HP and LP side) <table border="1" style="margin-left: 20px;"> <tr> <td>Flush diaphragm type:</td> <td>80 mm-JIS 10K, 30K (RF) equivalent flange 3"-ANSI 150, 300 (RF) equivalent flange</td> </tr> <tr> <td>Extended diaphragm type:</td> <td>100 mm-JIS 10K, 30K (RF) equivalent flange 4"-ANSI 150, 300 (RF) equivalent flange</td> </tr> </table>	Flush diaphragm type:	80 mm-JIS 10K, 30K (RF) equivalent flange 3"-ANSI 150, 300 (RF) equivalent flange	Extended diaphragm type:	100 mm-JIS 10K, 30K (RF) equivalent flange 4"-ANSI 150, 300 (RF) equivalent flange
Flush diaphragm type:	80 mm-JIS 10K, 30K (RF) equivalent flange 3"-ANSI 150, 300 (RF) equivalent flange				
Extended diaphragm type:	100 mm-JIS 10K, 30K (RF) equivalent flange 4"-ANSI 150, 300 (RF) equivalent flange				
Capillary tube length	2, 3, or 5 m				
Sp. gr. of liquid fill	0.935 at 25°C				
Air supply connection	Rc 1/4 or 1/4 NPT internal thread				
Air supply pressure	140±14 kPa {1.4±0.14 kgf/cm ² }				
Output	20–100 kPa {0.2–1.0 kgf/cm ² }				
External load	ID 4 mm × Length 3 m+20 cm ³ or over				
Air supply capacity	20Nℓ/minute or over, with 6.7 kPa {50 mmHg} change				
Air consumption	5Nℓ/minute or less (when balanced at output 100%)				
Accuracy	KDP 71: ±0.5% FS (for spans 0–50 to 0–500 kPa {0–5,000 to 0–50,000 mmH ₂ O}) ±1.0% FS (for spans 0–25 to 0–less than 50 kPa {0–2,500 to 0–Less than 5,000 mmH ₂ O}) KDP 72: ±0.5% FS (for spans 0–5 to 0–53.9 kPa {0–500 to 0–5,500 HzO}) ±1.0% FS (for spans 0–2.5 to 0–less than 5 kPa {0–250 to 0–Less than 500 mmH ₂ O})				
Dead band	0.1% FS				
Working pressure	–50 kPa {–0.5 kgf/cm ² } to maximum flange rated pressure. [Refer to Fig. 1, 6]				
Operating temperature	Meter body (process fluid): –40 to +120°C Transmitter (ambient): –30 to +80°C [Refer to Fig. 1]				
Operating humidity	10 to 90% RH				
Overload protection	Up to maximum flange rated pressure in either direction.				
Construction	Dustproof and waterproof, meets IEC IP54, NEMA Type 3R, JIS F8001 Class 3 splashproof, JIS C0920 rainproof				
Materials	Center body: SUS304 Flange: Carbon steel (SF45A), SUS304 Wetted parts: SUS316 (diaphragm: SUS316L), SUS316L, Monel, Tantalum Capillary tube: SUS316 Armored tube: SUS304 Transmitter case: Aluminium alloy				
Finish	Acryl baking finish Color: Light beige (munsell 4Y7.2/1.3)				
Mounting	Directly flange mounted to process flange. (transmitter body is mounted on vertical or horizontal 2 inch pipe)				
Weight	Approx. 17.5 kg (80 mm-JIS 10K flange, add 0.8 kg for air-set)				

Optional Specifications

Item	Specifications			
(1) Suppression and elevation	(unit: kPa (mmH ₂ O))			
	Model No.	Span	Suppression (max.)	Elevation (max.)
	KDP 71	25 to 500{2,500-50,000}	500{50,000}	475{47,500}
	KDP 72	2.5 to 53.9{250-5,500}	53.9{5,500}	51.4{5,250}
(note: elevation+span ≤ maximum span, suppression ≤ maximum span)				
(2) Air-set (filter and pressure regulator)	Primary pressure:	200 to 990 kPa {2-9.9 kgf/cm ² }		
	Secondary pressure:	140kPa {1.4 kgf/cm ² }		
	Filter mesh diameter:	5 microns		
	Connections:	Rc 1/4 or 1/4 NPT internal thread		

Optional Semi-standard Specifications

Item	Specifications	
(1) For vacuum use (Y23)	Y169, Y182 and Y183 are not available for Y23.	[Refer to Fig. 3, 6]
(2) High temperature use (Y62)	Fluid temperature: -10 to +280°C (+180°C... when monel or tantalum element)	
	Ambient temperature: -10 to +80°C Liquid fill: Special silicone oil (specific gravity: 1.07 at 25°C)	[Refer to Fig. 4, 6]
(3) For vacuum use and high temperature (Y23 plus Y62)	Y169, Y182 and Y183 are not available for Y23 plus Y62.	[Refer to Fig. 5, 6]
(4) Corrosion-resistant and silver finish (Y138)	Corrosion resistant (acryl baking) finish (Y138A): Resistant against corrosive gases.	
	Corrosionproof (epoxy baking) finish (Y138B): Resistant against corrosive liquids.	
	Silver-normal (acryl baking) finish (Y138C): To prevent temperature rise of instrument caused by direct sunlight or radiation from other source of heat.	
	Silver-corrosion-resistant (acryl baking) finish (Y138D): To prevent temperature rise the same as above, plus resistance against corrosive gases. (note: silver finish is not applicable for alkaline gases.)	
(5) Damping adjustment (Y169) (continuously adjustable)	Time constant: KDP71 Minimum 0.5 sec. or less Maximum 10 sec. or over	
	KDP72 Minimum 8.0 sec. or less Maximum 50 sec. or over (when capillary tube length is 5 m.)	
(6) For oxygen measurement (Y182)	Measuring element material: SUS316 or SUS316L Liquid fill: Fluorine oil (specific gravity: 1.915 at 25°C) Operating temperature (fluid and ambient temperature): -10 to +60°C Wetted parts treatment: Treated for degreasing	[Refer to Fig. 2, 6]
(7) For chlorine gas measurement (Y183)	Measuring element material: Tantalum Liquid fill: Fluorine oil (specific gravity: 1.915 at 25°C) Operating temperature (fluid and ambient temperature): -10 to +80°C Wetted parts treatment: Treated for degreasing	[Refer to Fig. 2, 6]
(8) Output pressure gauge (Y185)	Pressure gauge (100 mm diameter)	
		
(9) High vibration resistant type (Y188)	High vibration resistant type with dashpot.	

Model Number Table

Ex: KDP72-112210200A1-5.7

Basic Model No.	Flange Mat'l		Wetted Parts Mat'l		Flange Rating	Capillary Tube Length	Length of Extended Part of Flange	Air Piping Connections	Pressure unit / Output	Options	Description
	HP	LP	HP	LP							
KDP 71											0-25 to 0-500 kPa(0-2,500 to 0-50,000 mmH ₂ O)
KDP 72											0-2.5 to 0-53.9 kPa(0-250 to 0-5,500 mmH ₂ O)
	-1										Carbon steel (SF45A)
	-7										SUS304
		1									Carbon steel (SF45A)
		7									SUS304
			2								SUS316 (diaphragm: SUS316L)
			3								Monel (excluding extended diaphragm type)
			4								Tantalum (excluding extended diaphragm type)
			8								SUS316L
				2							SUS316 (diaphragm: SUS316L)
				3							Monel (excluding extended diaphragm type)
				4							Tantalum (excluding extended diaphragm type)
				8							SUS316L
					1						Flush diaphragm type 80mm-JIS10K (RF) equiv. flange
					2						Flush diaphragm type 80mm-JIS30K (RF) equiv. flange
					3						Flush diaphragm type 3"-ANSI150 (RF) equiv. flange
					4						Flush diaphragm type 3"-ANSI300 (RF) equiv. flange
					5						Extended diaphragm type 100mm-JIS10K (RF) equiv. flange
					6						Extended diaphragm type 100mm-JIS30K (RF) equiv. flange
					7						Extended diaphragm type 4"-ANSI150 (RF) equiv. flange
					8						Extended diaphragm type 4"-ANSI300 (RF) equiv. flange
						02					ℓ = 2 m
						03					ℓ = 3 m
						05					ℓ = 5 m
							00				Flush diaphragm type
							10				L = 100 mm (extended diaphragm type)
							15				L = 150 mm (extended diaphragm type)
								A			Rc 1/4 internal thread
								B			1/4 NPT internal thread
									1		kgf/cm ² (or mmH ₂ O) / 0.2 to 1.0 kgf/cm ²
									2		PSI / 3 to 15 PSI
									3		bar / 0.2 to 1.0 bar
									4		Pa / 20 to 100 kPa
									8		Pa / 19.6 to 98.1 kPa (equality to 0.2 to 1.0 kgf/cm ²)
									-X		No option
									-5		Elevation
									-6		Suppression
									-7		Air-set

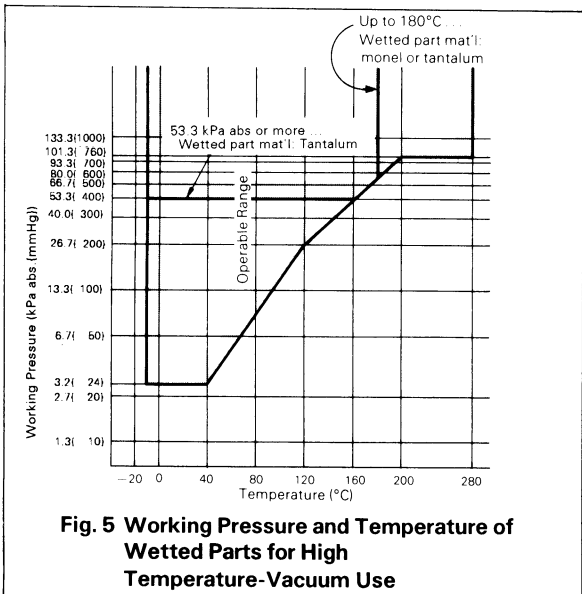
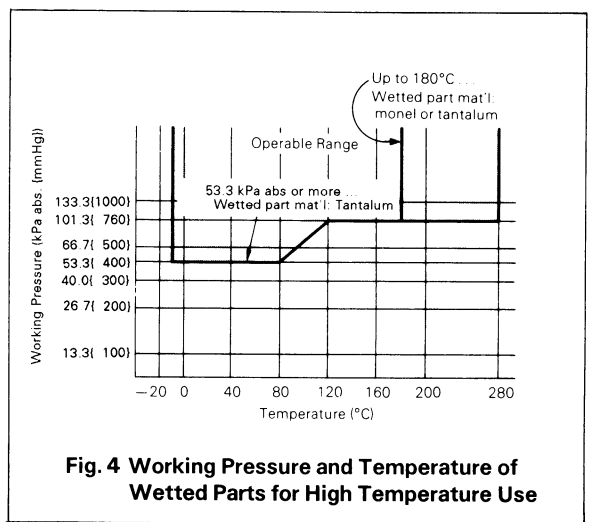
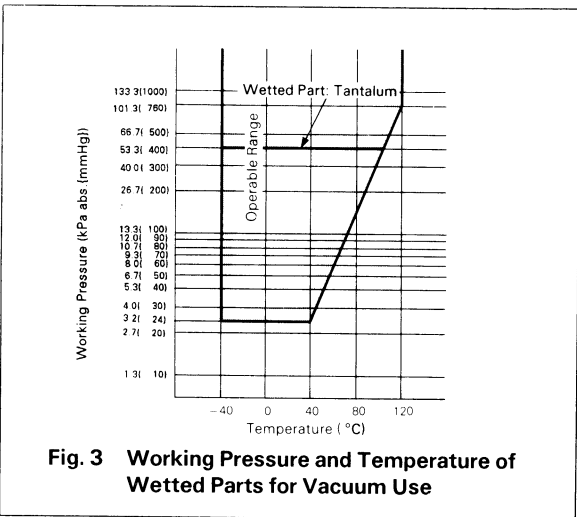
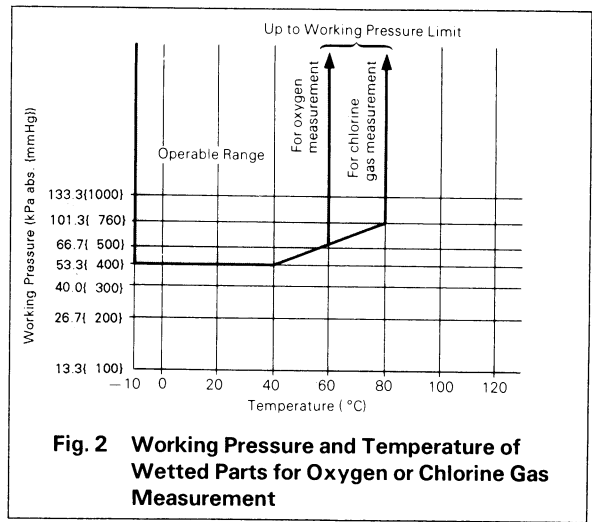
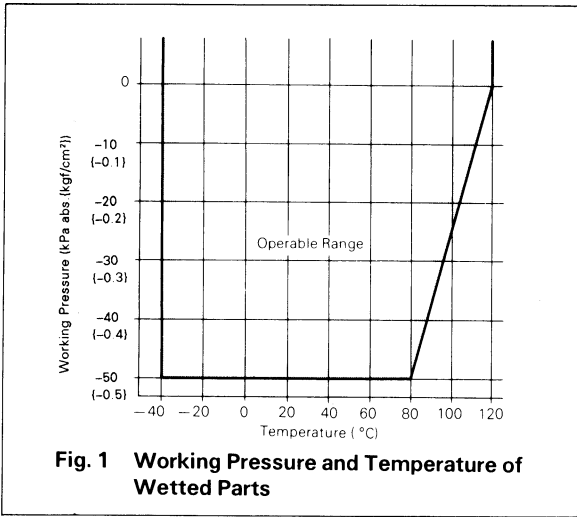
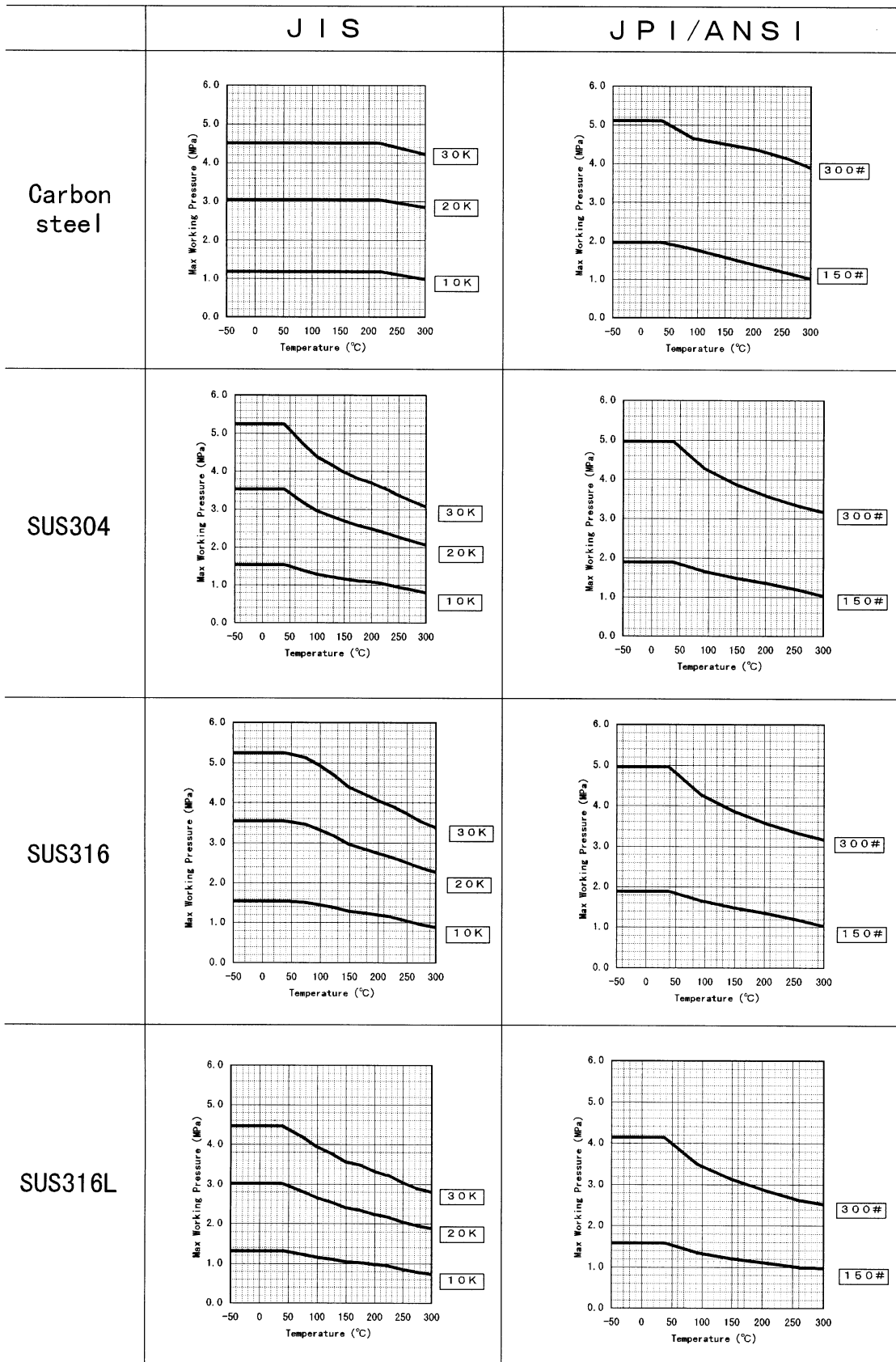


Fig6. Max Working Pressure

Note1. Max Working Pressure depends on flange rating, flange materials and operating temperature. Please refer to the following data.

Operating range of temperature depends on specification of transmitters

Note2. In case of remote sealed type (KKP75,KFKB□□-75), Max Working Pressure depends on the smaller value of either 1.05MPa or following data.



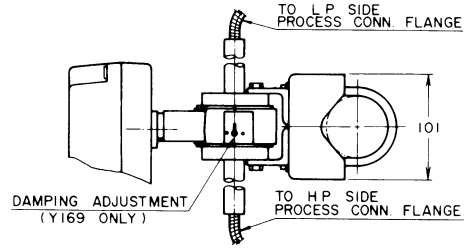
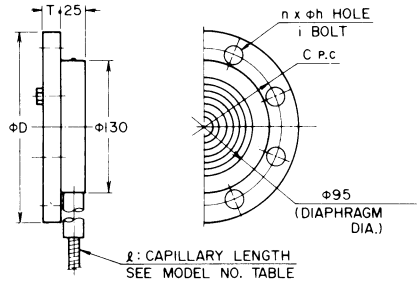
Dimensions

Flush Diaphragm Type

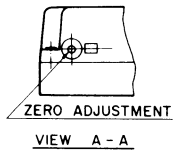
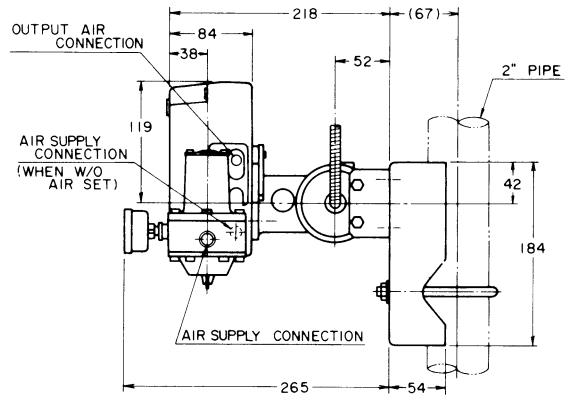
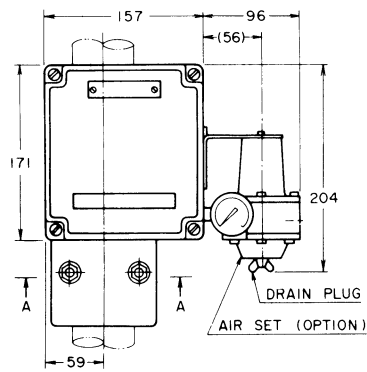
Flange Dimensions

(Unit: mm)

ITEM	FLANGE RATING	D	T	C	n	h	i BOLT
1	80 mm JIS 10K RF	185	18	150	8	19	M16
2	80 mm JIS 30K RF	210	28	170	8	23	M20
3	3" ANSI 150 RF	191	24	152.4	4	19	5/8
4	3" ANSI 300 RF	210	29	168.3	8	22	3/4
A	3" JPI 150 RF	191	24	152.4	4	19	5/8
B	3" JPI 300 RF	210	29	168.3	8	22	3/4



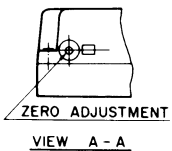
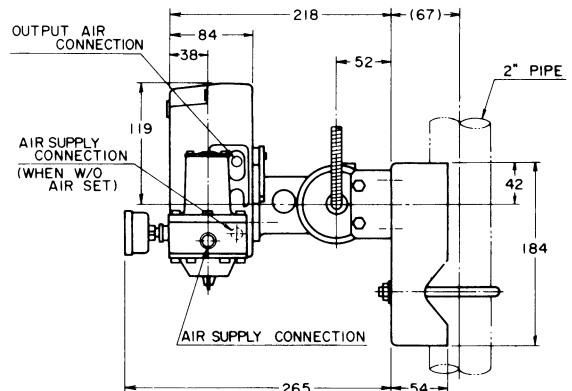
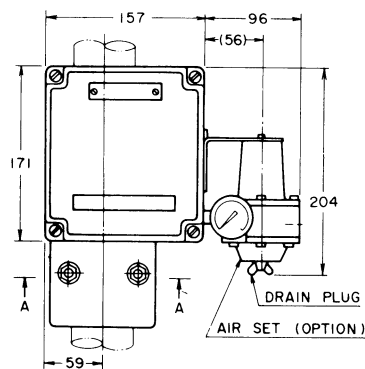
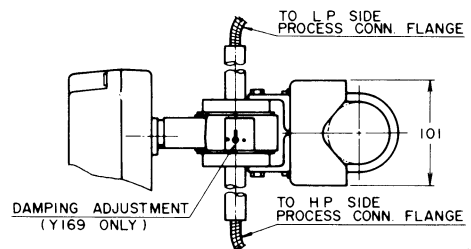
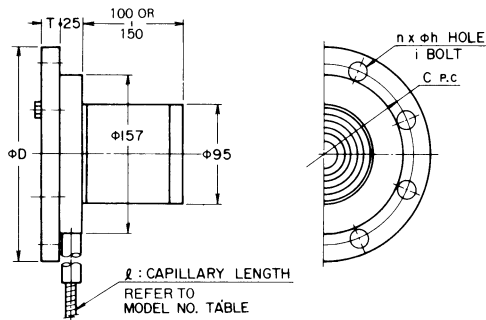
TAG NO. PLATE



Extended Diaphragm Type

Flange Dimensions

ITEM	FLANGE RATING	D	T	C	n	h	i BOLT
5	100 mm JIS 10K RF	210	18	175	8	19	M16
6	100 mm JIS 30K RF	240	32	195	8	25	M22
7	4" ANSI 150 RF	229	24	190.5	8	19	5/8
8	4" ANSI 300 RF	254	32	200	8	22	3/4
C	4" JPI 150 RF	229	24	190.5	8	19	5/8
D	4" JPI 300 RF	254	32	200	8	22	3/4



Ordering Information

When ordering, please specify:

1) Model No.

2) Measuring range

Note) PREX3000 Transmitter covers a wide measuring range. At a span close to the minimum range point, however, the instrument exhibits particular characteristics. When operating the instrument at this span, refer to Instrumentation Data Sheet ID2-522-002.

3) Optional specification

4) Optional semi-standard specification

Note) For any combination of two or more Y-specification items, please consult an Azbil Corp. agent.

Reference instruction manual . . .

OM2-5220-0000/

OM2-5220-1100

Please read the "Terms and Conditions" from the following URL before ordering or use:

<http://www.azbil.com/products/bi/order.html>

Specifications are subject to change without notice.



Azbil Corporation

Advanced Automation Company

1-12-2 Kawana, Fujisawa

Kanagawa 251-8522 Japan

URL: <http://www.azbil.com/>

(10)

8th Edition: July 2012

No part of this publication may be reproduced or duplicated without the prior written permission of Azbil Corporation.