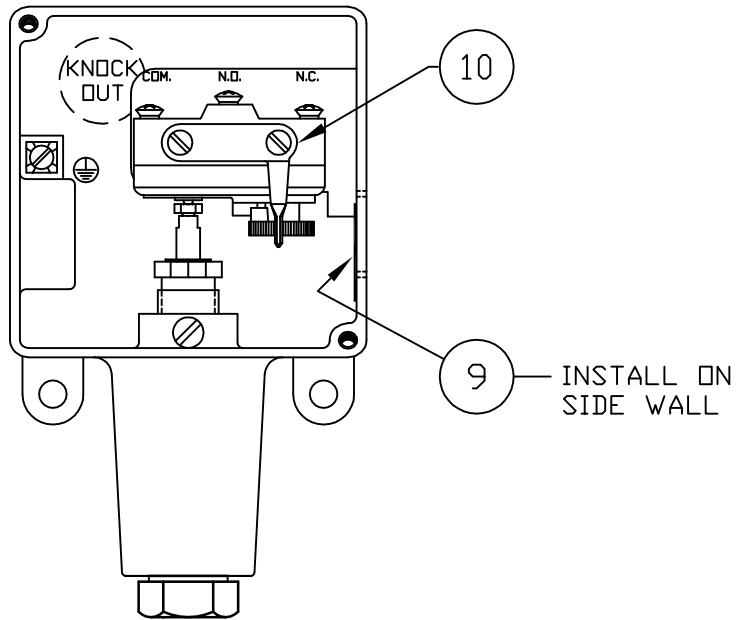


FOR ASSEMBLY REF.: M-12709



CUSTOMER:  
UEC STANDARD

U.E. TYPE:  
H100-15623


SPECIFICATIONS:  
SIMILAR TO TYPE H100 MODEL 701 TO 705 EXCEPT:  
ADJUSTABLE DIFFERENTIAL SWITCH.  
WETTED MATERIAL: st/st PRESSURE CONNECTION  
VITON DIAPHRAGM & O-RING  
RANGE: 20 TO 200 psi  
DEADBAND: 12 TO 26 psi; BETWEEN 80 & 140 psi

SYM	DESCRIPTION	DATE	DWN	APPD
C	TYPE SPEC. WAS: *SAME AS TYPE H100 MODEL 704... ECN#E3329	10-2-09	SR	JJM
B	CHANGED CUST TO UEC ECN#E0297	4/16/03	AB	LK
A	FIRST ISSUE. ECN#E0252	3/10/03	PLW	L.K.
REVISIONS				

ORIGINAL DATE	3/10/03
DRWN	PLW
CHKD	A.B.
APPD	LEVON
UNLESS OTHERWISE SPECIFIED DIMENSIONS ARE IN INCHES TOLERANCES ON FRACTIONS ±1/64 2 PLACE DEC 3 PLACE DEC ANGLES ±.010 ±.005 ±1/2° DO NOT SCALE THIS DRAWING	

TITLE	H100-15623
SCALE	NONE

DF001  
REV. B



UNITED ELECTRIC  
CONTROLS COMPANY  
WATERTOWN \* MASSACHUSETTS

DWG NO  
12709-29