



PRODUCT SPECIFICATIONS

Systems Accessories

THERMON HEAT TRACING CABLES

TERMINATOR™ NONMETALLIC POWER CONNECTION, SPLICE AND END-OF-CIRCUIT LIGHT KITS

Terminator nonmetallic accessories are approved for ordinary and Division 2 hazardous locations. The kits have a maximum pipe exposure temperature rating of 482°F (250°C) with a minimum installation temperature of -76°F (-60°C).



Terminator DP is designed to fabricate power connections, in-line/T-splice connections or for making end terminations. Electrical connections are made in terminal blocks utilizing nickel-plated copper terminals to ensure corrosion-free electrical integrity. The up front positioning of the terminal block permits easy access during termination and for future routine maintenance.

The Terminator DP kit includes: Type 4X junction box with integral gasket, three-point DIN mount terminal block with nickel-plated copper terminals (600 V, 50 A), pipe-mounted fitting, stainless steel pipe attachment band for piping 10" or less. (PETK/SCTK termination kit required, order separately)

DP BSX, RSX, HTSX, KSX, VSX-HT, USX, HPT, FP
DP-M TEK, HTEK



Terminator DS/DE is designed to fabricate in-line splices or end terminations.

Terminator DE-B is designed to provide visual indication of an energized heating circuit.

Electrical connections are made using wire fasteners. Once the kit is assembled, a tool is required to remove the cover to gain access for maintenance or testing. (For applications requiring terminations to be made with terminal block connections, the Terminator DP or DL kit may be used.)

The Terminator DS/DE and DE-B kits include: Type 4X pipe-mounted fitting with locking splice cover, stainless steel pipe attachment band for piping 10" or less. (PETK/SCTK termination kit required, order separately)

DS/DE BSX, RSX, HTSX, KSX, VSX-HT, USX, HPT, FP
DE-B BSX, RSX, HTSX, KSX, VSX-HT, USX, HPT, FP



Terminator DL is designed to provide visual indication of an energized heating circuit. The kit may be utilized as a power connection or an end termination kit. Electrical connections are made in terminal blocks utilizing nickel-plated copper terminals to ensure corrosion-free electrical integrity.

The Terminator DL kit includes: Type 4X junction box, yellow raised light, diode indicating lamp, three-point DIN mount terminal block with nickel-plated copper terminals, pipe-mounted fitting, stainless steel pipe attachment band for piping 10" or less. (PETK termination kit required, order separately)

DL BSX, RSX, HTSX, KSX, VSX-HT, USX, HPT, FP

TRACEPLUS™ NONMETALLIC POWER CONNECTION, SPLICE AND END-OF-CIRCUIT LIGHT KITS

TracePlus nonmetallic accessories are approved for ordinary and Division 2 hazardous locations. The kits have a maximum pipe exposure temperature rating of 400°F (204°C) with a minimum installation temperature of -20°F (-29°C).



PCA is designed to fabricate power connections, in-line/T-splice connections or for making end terminations.

The PCA kit includes: Type 4X junction box, pipe-mounted expediter, 2 stainless steel pipe attachment bands for piping 10" or less. (PETK/SCTK termination kit required, order separately)

PCA-H BSX, HTSX, USX, KSX, HPT, FP
PCA-V RSX, VSX-HT



PCS is designed to fabricate accessible outside-the-insulation splices or end terminations.

The PCS kit includes: Type 4X pipe-mounted expediter with splice cover, 2 stainless steel pipe attachment bands for piping 10" or less. (SCTK termination kit required, order separately)

PCS-H BSX, HTSX, KSX, USX, HPT, FP
PCS-V RSX, VSX-HT



VIL-6 is designed to provide visual indication of an energized heating circuit. 120 Vac (option 1), 208 Vac (option 4), 240 Vac (option 2) or 277 Vac (option 3).

The VIL-6 kit includes: Type 4X junction box, pipe-mounted expediter, Amber light assembly, 2 stainless steel pipe attachment bands for piping 10" or less. (PETK termination kit required, order separately)

VIL-6-H BSX, HTSX, KSX, USX, HPT, FP
VIL-6-V RSX, VSX-HT



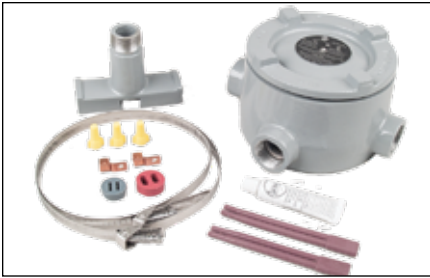
PRODUCT SPECIFICATIONS

Systems Accessories

THERMON HEAT TRACING CABLES

METALLIC POWER CONNECTION, SPLICE AND END-OF-CIRCUIT LIGHT KITS

Thermon metallic accessories utilize epoxy-coated aluminum junction boxes and expeditors and are approved for ordinary and Division 2 hazardous locations. The kits have a maximum pipe exposure temperature rating of 482°F (250°C) with a minimum installation temperature of -60°F (-51°C).



ECA-1 is designed for connecting one or two heating cables to power or for splicing two cables together.

The ECA-1 kit includes: epoxy-coated Type 4X/7 junction box, pipe-mounted expeditor, 2 stainless steel pipe attachment bands for piping 4" or less, heater cable grommet, 2 power connection boots, RTV adhesive, wire fasteners and grounding lug.

- ECA-1-SR** BSX, RSX, HTSX, KSX, VSX-HT, USX
- ECA-1-ZN** FP, HPT



ECT-2 is designed for connecting three heating cables to power or for splicing three cables together.

The ECT-2 kit includes: epoxy-coated Type 4X/7 junction box, pipe-mounted expeditor, third cable entry assembly, 2 stainless steel pipe attachment bands for piping 4" or less, heater cable grommets, 3 power connection boots, RTV adhesive, wire fasteners and grounding lug.

- ECT-2-SR** BSX, RSX, HTSX, KSX, VSX-HT, USX
- ECT-2-ZN** FP, HPT



VIL-4C is designed to provide visual indication of an energized heating circuit. 120 Vac (option 1), 208 Vac (option 4), 240 Vac (option 2) or 277 Vac (option 3).

The VIL-4C kit includes: pipe-mounted expeditor, amber light assembly in Type 4X box, 2 stainless steel pipe attachment bands for piping 4" or less, heater cable grommet, power connection boot, RTV adhesive, 2 ring terminals and grounding splice lug.

- VIL-4C-SR** BSX, RSX, HTSX, KSX, VSX-HT, USX
- VIL-4C-ZN** FP, HPT

CABLE END TERMINATION KITS, ATTACHMENT TAPES AND MISCELLANEOUS ITEMS



PETK circuit fabrication kit includes a power boot, end cap, RTV adhesive.

SCTK splice connection/termination kit includes a power boot, wirenuts, RTV adhesive.

- PETK-1D / SCTK-1D** BSX, RSX, VSX-HT
- PETK-2D / SCTK-2D** KSX, HTSX, USX
- PETK-3D / SCTK-3D** FP, HPT



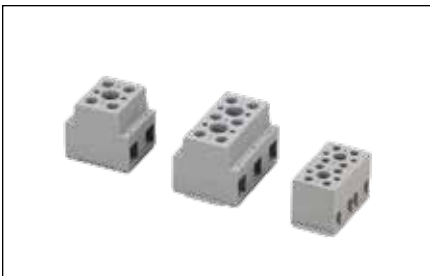
ET-6C, ET-7C, ET-8C end termination kits are designed to properly terminate the end (away from power) of a heat tracing circuit. Each kit includes a rubber end cap, RTV adhesive and caution label.

- ET-6C** BSX, RSX, VSX-HT
- ET-7C** HPT (BN)
- ET-8C** HTSX, KSX, USX, FP & HPT (OJ)



TBX-3LC, TBX-4LC power connection boots are used to prepare heating cable for connection to power. Kit includes rubber boot and RTV adhesive.

- TBX-3LC** BSX, RSX, VSX-HT
- TBX-4LC** HTSX, KSX, USX, FP & HPT



TB-2F, TB-3F, TB-4F floating terminal blocks for use inside metallic (ECA, ECT) and non-metallic (PCA, PCS) junction boxes.

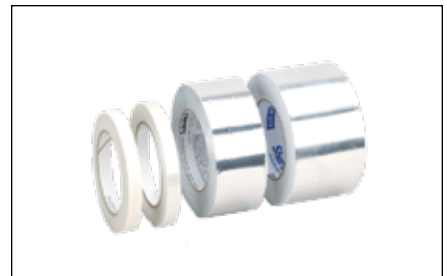
- TB-2F** 2-point-rated 65A @ 600 Vac, 22- 6 AWG
- TB-3F** 3-point-rated 65A @ 600 Vac, 22- 6 AWG
- TB-4F** 4-point-rated 30A @ 250 Vac, 26- 10 AWG



CL vinyl-based peel and stick caution labels are intended for direct exposure to industrial environments. Electrically heated pipelines and vessels are to be clearly identified at frequent intervals. Caution labels should be placed at 10'-20' (3-6 m) intervals or as required by code or specification.

B-4, B-10, B-21 stainless steel attachment bands for securing Thermon connection kits to pipes. Each connection kit includes two bands.

- B-4** for pipes up to 4" (100 mm) diameter
- B-10** for pipes up to 10" (250 mm) diameter
- B-21** for pipes up to 21" (530 mm) diameter



FT-1L, FT-1H fixing tapes for attaching heating cable to piping every 12" (30 cm) or as required by code or specification.

AL-20L, AL-20H, AL-30L, AL-30H aluminum tape for continuous (longitudinal) covering.

Catalog #	Temp. Max.	Min. Install	Dimensions
FT-1L	200°F	40°F	1/2" x 108'
FT-1H	500°F	-40°F	1/2" x 108'
AL-20L	150°F	40°F	2" x 150'
AL-20H	300°F	20°F	2" x 180'
AL-30L	150°F	40°F	3" x 150'
AL-30H	300°F	20°F	3" x 180'