

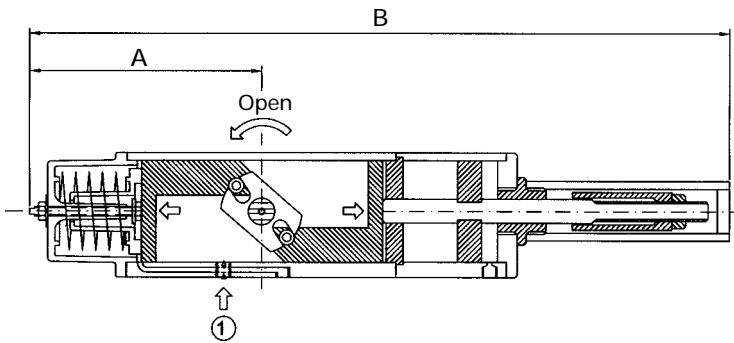
▶ RC200-DOS ◀

3-position dosing actuator with spring return

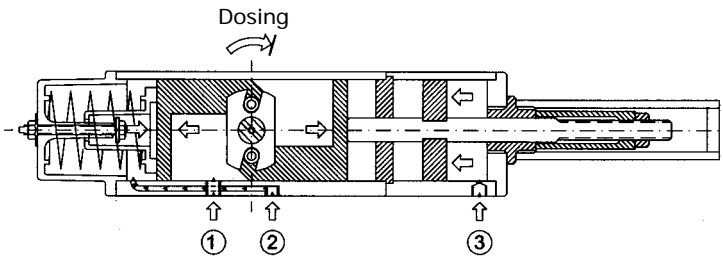


- ▶ With spring return for guaranteed safety to closed position
- ▶ Adjustable dosing position from open to closed
- ▶ Exact filling of products over a given scale
- ▶ Very easy to control the operating cycle with two 3/2-way pilot valves
- ▶ Connection according to DIN 3337/ISO 5211
- ▶ For 90° valves up to 660 Nm closing torque at 6 bar

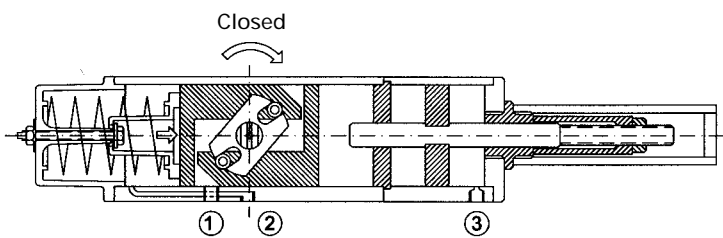
FUNCTION METHOD



Open position: Port 1 is supplied with air.



Dosing position: Port 1, 2 and 3 are supplied with air.

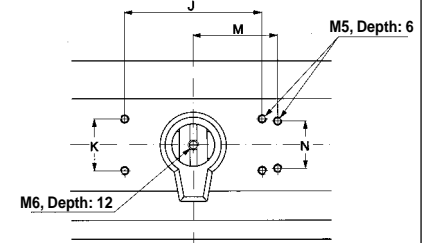
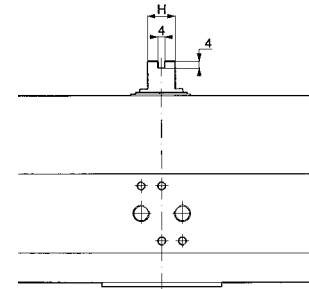
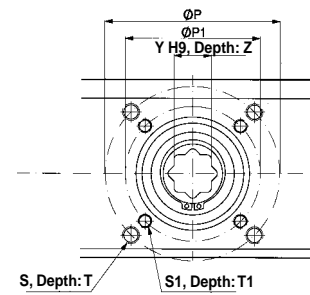


Closed position: Port 1, 2 and 3 are vented, spring closes.

TORQUE in Nm. Air pressure 0,55 Mpa (6 bar)

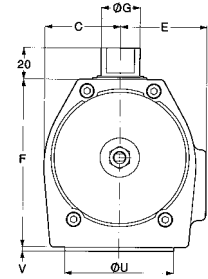
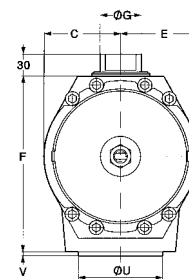
Type	ISO5211 DIN 3337	Air opens	Spring closes and dosing		
			90°	30°	0°
RC210-DOS	F05	58	17,5	4,5	11,5
RC230-DOS	F10	220	75	24	42
RC250-DOS	F12	710	240	90	150
RC270-DOS	F16	2900	910	390	660

90° = Open
0° = Closed



RC270

RC210-250



AIR CONNECTIONS:

RC210-230 3 x R1/8", Depth 8
RC250-270 3 x R1/4", Depth 12

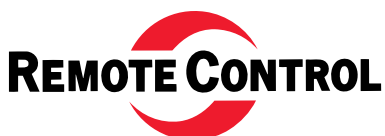
MEASUREMENTS RC200-DOS

Std Option

Type	A	B	C	E	F	G	H	J	K	M	N	FI	P	S	T	FI	P1	S1	T1	U	V	Y	Z	Y	Z	Weight kg
RC210	150	432	32	41	75	16	10	-	-	40	30	F05	50	M6	11	-	-	-	-	35	2	14	19	-	-	3,2
RC230	200	592	49	55	110	25	16	80	30	-	-	F10	102	M10	17	F07	70	M8	14	70	3	22	30	17	30	9
RC250	285	813	69	75	155	35	22	80	30	-	-	F12	125	M12	21	F10	102	M10	17	85	3	27	37	22	37	20
RC270	510	1380	110	110	248	60	40	130	30	-	-	F16	165	M20	32	F12	125	M12	25	130	5	46	64	36	64	85

RC270-DOS also has the following hole pattern on the bottom side: CC 234,7 x 97,2 mm, 4 pcs M16, depth 25 mm, which corresponds to 4 pcs of 8 pcs F25-holes.

We reserve our right for modifications caused by technical development



Remote Control Sweden AB · Kontrollvägen 15 · SE-791 45 Falun · Sweden · Tel. +46(0)23 587 00 · Fax +46(0)23 587 45
rc.falun@remotecontrol.se · www.remotecontrol.se

Ref nr 451B / Art nr 980451