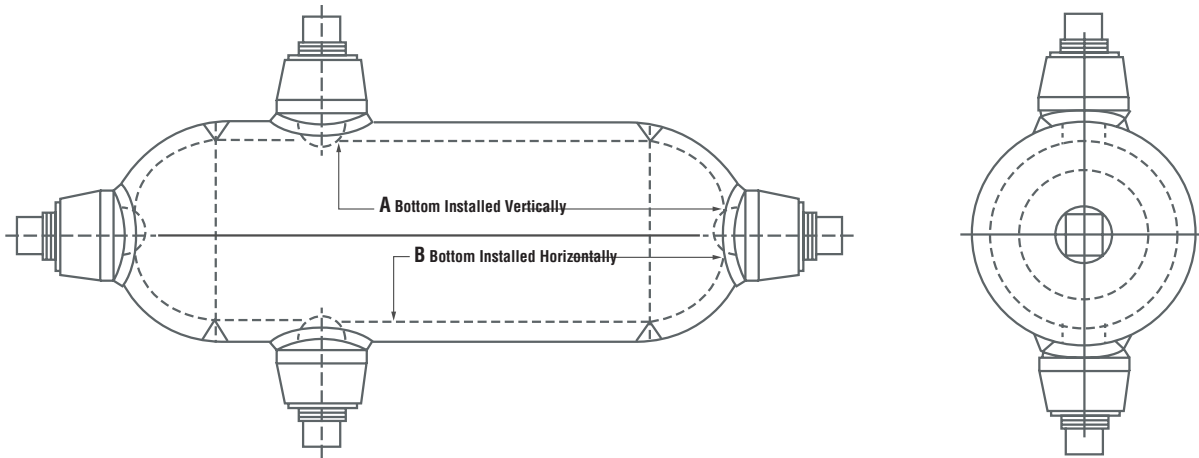




# Seal Pot

**Material:**

Grade A/B Schedule 40 or 80 Seamless Pipe and 3000 lb. Threadolets  
 Test Pressure: 1600 P.S.I. Cold Hydrostatic Pressure  
 Working Pressure: 750 P.S.I., Temperature 750°F  
 All outlets plugged with Solid Steel Plugs  
 Finish: Red or Grey Oxide Primer



Model	Length	Pipe Size	Connection Side		Connection End		Schedule Pipe
			No.	Size	No.	Size	
SP-3-40-08- E or L	11"	3"	2	1/2"	2	1/2"	40 or 80
SP-3-80-08- E or L		3"	2	1/2"	2	1/2"	40 or 80
SP-4-40-08- E or L	14"	4"	2	1/2"	2	1/2"	40 or 80
SP-4-80-08- E or L	15"	4"	2	1/2"	2	1/2"	40 or 80
SP-6-40-08- E or L	TBA	6"	2	1/2"	2	1/2"	40 or 80
SP-6-80-08- E or L		6"	2	1/2"	2	1/2"	40 or 80

08 = 1/2 NPT  
 E = A105 Carbon St.  
 L = 316/L



MACHINING & MANUFACTURING LTD.

1-877-MAC-WELD (622-9353)

1324 Lougar Avenue, Sarnia, Ontario N7S 5N7 Tel: (519) 332-1388 Fax: (519) 332-3280

www.mac-weld.com